

Fire Probe Quick Usage Guide

Starting data loggers:

Step 1: Open up the MadgeTech 4 data logger software.

Step 2: Plug in a single data logger using the provided cable. One end goes into the USB port on your computer and the other end into the data logger.

Step 3: Click the “Batch Start” button under the device tab (see Figure 1).

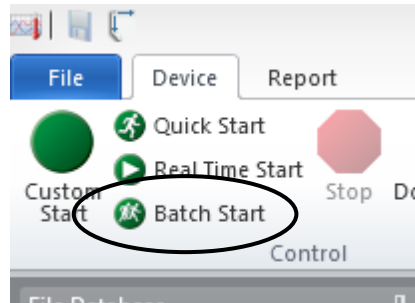


Figure 1. Showing “Batch Start” button

Step 4: Configure batch Start settings including start and stop time as well as read rate (see Figure 2).

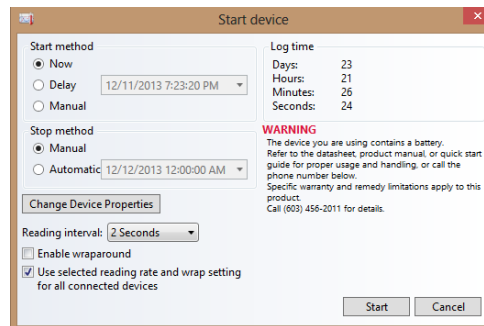


Figure 2. Batch start settings menu.

Step 5: You will then need to plug each data logger in. Wait for the screen to display “Starting” wait for a few seconds for the program to configure the setting and start the data logger. When the data logger is done, the screen will say “Started” (see Figure 3). When this happens the data logger can be unplugged and the next can be plugged in. Repeat this for all the data loggers you will be using. Once all the data loggers are started click “Stop and close” and they are now ready to go.

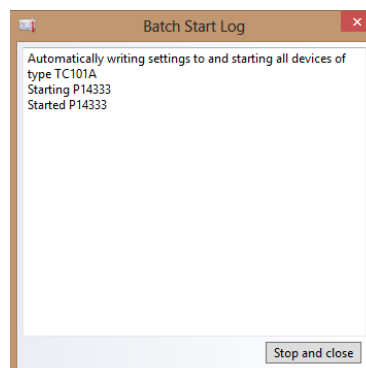


Figure 3. Batch Starting log showing the started device.

Fire Probe Quick Usage Guide

Device deployment:

Step 1: The data loggers should either be logging data or set-up to start at a determined time. If you do not know how to do this, see “MadgeTech 4 Software User Guide.”

Step 2: The device should be transported into the field with the thermocouple probes retracted into the case. If this is not the case, the insulation can be removed and carried.

Step 3: Find a good location for the fire probe. Dig a hole 4 inches or wider and 12 inches or deeper. Make one face of the hole flat.

Step 4: Remove the top cap from the fire probe. Deploy the thermocouples by grabbing them with one hand and pushing them out of the outer case (see Figure 4).



Figure 4. A hand deploying the probes.

Step 5: Place the insulation behind the thermocouple rack to keep it from retracting (see Figure 5). Replace the top cap on the device.



Figure 5. Insulation keeping the probes from coming back in.

Step 6: Place the device into the hole with the thermocouples positioned towards the flat face of the hole. Press the thermocouples into the ground (making sure the soil they are in is naturally packed soil) by pushing on the other side of the device (see Figure 6).



Figure 6. Pushing the probes into the dirt by hand.

Step 7: Backfill the hole making sure not to move the device. Cover the top of the device with very little soil, less than one centimeter of soil.